

SOLOMON



# E-business

---

*Make e-business everyday business with  
partners, vendors, customers and your employees*

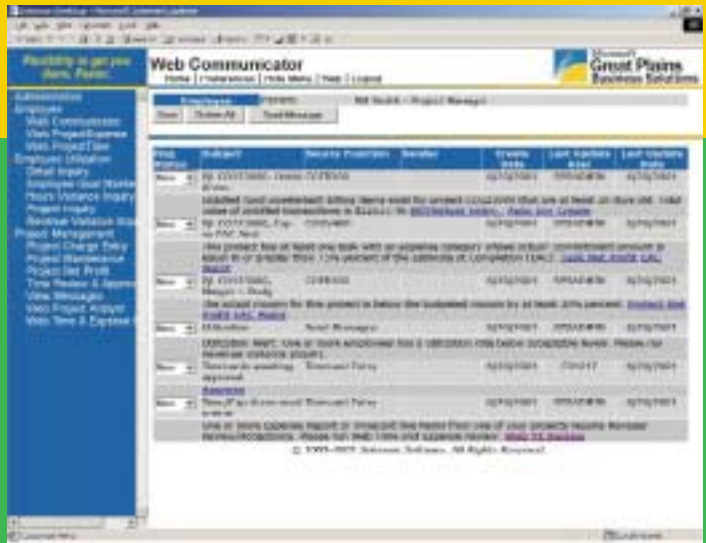
---

**Companies of all sizes** around the world are incorporating various aspects of e-business into their everyday operations. Before you know it, we won't specifically refer to e-business anymore when we talk about doing business over the Internet. E-business will become part of the fabric of everyday business.

That is why Solomon's main goal is to give our customers the flexibility to make e-business a part of their everyday business today. Whether you need to reach new markets, create new products, manage projects, streamline interactions with business partners or get information to your employees anytime, anywhere – Solomon can get you there. Faster.

- **Take care of business from anyplace at any time**  
When you're not in the office, work doesn't stand still until you return. And for employees who work in remote locations, Solomon allows you to continue working without interruption from anywhere with a simple Internet connection. Access reports, financial statements, or approve timesheets and expenses, all through your Web browser.
- **Empower your employees**  
With an easy-to-use interface, the Solomon Desktop gives your employees the ability to access reports, look up customer, vendor, and benefit information, submit timesheets and expense reports, and more all via the Web. This also allows managers to approve timesheets with the click of a mouse, and your human resources and accounting teams to focus their time on more important projects.
- **Provide your customers with information 24 x 7**  
Today's customers are more demanding than ever before. In order for you to retain their business, you need to provide exceptional customer service. If you have customers located across the country or around the world, you need to be available during their business hours. By providing 24 x 7 secure access to your customers' orders, their account information and more, you are providing service your competitors cannot offer, and increasing customer loyalty.
- **Give your vendors access to self-service**  
You can empower your vendors right away to look up their own account information through Solomon Desktop so your employees can spend their time paying vendors and taking advantage of discounts.

Solomon Desktop provides a secure, web-based portal to 100% of the information in the Solomon IV application. Nearly all reports are immediately accessible for easy distribution of information to employees.



Trans#	Description
810	Invoice
850	Purchase Order
860	Purchase Order Change
864	Text Message
875	UCS Purchase Order
880	UCS Invoice
945	Warehouse Shipment Advice

Inbound EDI transactions supported

Trans#	Description
810	Invoice
850	Purchase Order
856	Advance Ship Notice
857	Invoice/Advance Ship Notice
875	UCS Purchase Order
880	UCS Invoice
940	Warehouse Shipment Order
997	Functional Acknowledgement
998	

Outbound EDI transactions supported

e-Commerce Gateway – EDI Edition helps you integrate and automate your business transactions with your customers, vendors, and remote warehouses.

Web Order enables your own staff and existing customers to securely enter orders via the Internet, check the status of those orders any time, and inquire into current inventory availability and pricing.



## **Access Key Information with Solomon Desktop**

Solomon Desktop provides employees and business partners secure, Internet-based access anytime and anywhere to 100% of the capabilities of Solomon. It brings an integrated, personalized view of Solomon to an individual's desktop.

## **..... Utilize Web Self-Service Bundle to Keep Business Flowing**

This collection of Web-based applications including Web Employee Inquiry, Web Payroll Time, Web Vendor Inquiry, Web Customer Inquiry, Web Project Time and Web Project Expense give your vendors, customers and employees access to more information to service themselves on their own time.

## **Automate Processes and Reporting with Application Server**

Set up operational reports to be distributed automatically to your employee and management teams via email, saved to a public folder, or posted to an intranet – all without intervention – with Application Server.

## **Manage the Project, Not the Process**

Solomon Communicator keeps you informed of critical project aspects automatically – through the use of alerts. Alerts can be viewed in the system or sent via e-mail, so your managers can receive them in or out of the office.

## **..... Automate Business Transactions**

Solomon e-Commerce Gateway – EDI Edition integrates and automates your business transactions with your customers, vendors, and remote warehouses. And, you can transmit a paperless EDI invoice back to your customer's computer, promptly and ready for payment.

## **..... Place Orders via the Web**

Solomon Web Order enables your staff and existing customers to securely enter orders over the Internet, directly into the Solomon Supply Chain Management Order Management system. Customers can use Web Order to check the status of those orders any time, day or night, and inquire into current inventory availability and pricing.

## **Process AP Transactions on the Internet**

eVoucher is used for the entry of AP vouchers and vendor account maintenance – all from within a Web browser. Ideal for companies with remote office locations or for companies wishing to leverage the power of an intranet.

In the past we had a difficult time giving our geographically dispersed employees access to all the information they need. Solomon Desktop has made this possible because it gives our Project Managers access to that data from wherever they are working. Project Managers are now in control of the reports they generate and have the results delivered to their email in-boxes. We have already saved more than \$100,000 in training and hardware implementation costs while making our jobs easier. That's hard to beat.

Deena Spivey, Manager of Financial Systems and Planning, TAC Americas

## Running reports is a simple and easy task with Solomon IV's Application Server.

We've set up Application Server to run our reports automatically during off-hours. For example, the anticipated delivery report is printed Monday through Friday at 8 a.m. A sales analysis report is automatically run on the first day of every month at 2 a.m. Having a computer handle these tasks gets them done faster and ultimately makes us more efficient and profitable.

Steve Wierenga, Vice President of MIS, Ajacs Die Sales Corp.

# Solomon

product reviews  
pricing and purchasing  
the latest news and information  
[www.greatplains.com](http://www.greatplains.com)

## Find out more.

Visit our Web site at [www.greatplains.com/solutions](http://www.greatplains.com/solutions) to build your own learning kit, fill it with detailed research about the products you're interested in, and get the pricing and purchasing information you need to get started with Microsoft Great Plains.



PO Box 414  
Findlay, Ohio 45839-0414 USA  
Phone: 419.424.0422  
USA & Canada: 800-4SOLOMON  
International: +1.419.424.0422  
Fax: 419.424.3400  
Sales Information E-Mail:  
[sales@solomon.com](mailto:sales@solomon.com)  
[www.greatplains.com](http://www.greatplains.com)  
[www.microsoft.com](http://www.microsoft.com)

© 2001 Great Plains Software, Inc. All rights reserved. Solomon Software, Great Plains and the Great Plains logo are either registered trademarks or trademarks of Great Plains Software Inc., in the United States and/or other countries. Great Plains Software Inc. is a wholly owned subsidiary of Microsoft Corporation. Microsoft is either a registered trademark or trademark of Microsoft Corporation in the United States and/or other countries.

All features/functions mentioned within are subject to change. This document is for information purposes only. Great Plains Software, Inc. makes no warranties, express or implied, in this document.

LDBR-0000-SB00000 (7/01)