

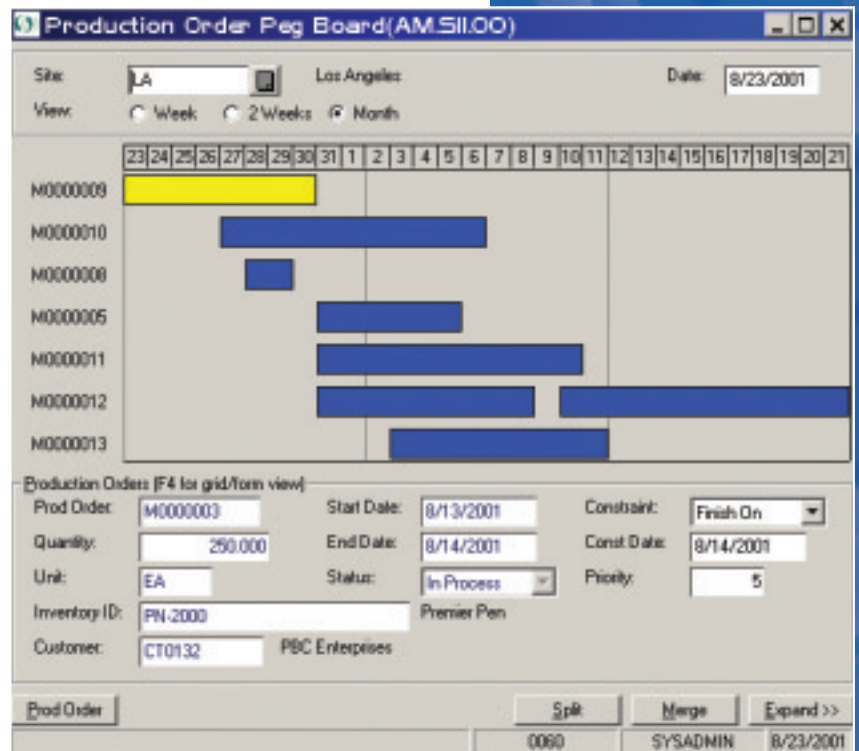
When Manufacturing is your Business™

J A A S
S Y S T E M S

Of the many challenges facing manufacturing organizations none is more critical than aligning goals of the company with individual departments. In the past, lack of meaningful and timely information has contributed to these profit robbing conflicts, JAMS—JAAS Advanced Manufacturing Software, provides the information alignment needed to reduce these organizational issues.

JAMS was written to interface seamlessly with Solomon Software's award winning application suite. JAMS uses the financial, distribution, and project series of Solomon to provide a comprehensive solution. By leveraging Solomon's flexible architecture, JAMS has created an environment that is easy to manage, yet powerful. JAMS readily provides the information needed by manufacturers to remain profitable in a changing marketplace.

JAMS is a series of application modules designed to provide real time enterprise solutions for many different types of manufacturers. The principles of JAAS have over 100 years of experience in the design and implementation of manufacturing systems. When combined with Solomon, a product of Microsoft Business Solutions, JAMS provides the most cost-effective manufacturing system in the mid-range market today.



Key Features of the Modules

Bill of Material/Routing

- Supports Alternate Bill of Materials/Routing
- Infinite Levels on the Bill of Material
- Statistical Process Controls (SPC) record keeping within work orders
- Unlimited Production Steps in the Work Center

Production Management

- Multi-Company/Multi-Site Support
- Revision Level Support
- Labor Transactions interface into Solomon Payroll Time Entry
- Apply Overhead for Activity Based Costing

Material Requirements Planning

- Generates Purchase Orders
- Forecasts
- Net Change On-Line Process
- Windows NT scalability

Capacity Requirements Planning

- Displays Exception Messages from MRP
- Production Order Gantt Displays all Operations for a Production Order
- Extensive Drill down Capabilities for Additional Information
- Scheduling Capacity Screen for Visual Determination of Utilized Capacity

Product Configurator

- "Rules Based System" designed around features and options logic
- Provides a total integrated Solomon Supply Chain Solution

Solomon Software, Great Plains and the Great Plains logo are either registered trademarks or trademarks of Great Plains Software, Inc., in the United States and/or other countries. Great Plains Software, Inc., is a wholly owned subsidiary of Microsoft Corporation.

Microsoft and Windows NT are either registered trademarks or trademarks of Microsoft Corporation in the United States and/or other countries.

JAAS Advanced Manufacturing Software, the JAMS logo, the JAAS logo, and JAMS are the trademarks of, and When Manufacturing Is Your Business is a service mark of, JAAS Systems, Ltd.

©1999-2002 JAAS Systems, Ltd. All Rights Reserved

All features/functions mentioned within are subject to change. This document is for informational purposes only. JAAS Systems, Ltd., makes no warranties, expressed or implied, in this document.