

Material Requirement Planning (MRP)

When Manufacturing is Your Business sm

Your company goals for an MRP System probably include reducing:

- WIP, Raw Material, and Finished Goods Inventories
- Order change resistance
- Expediting
- Delinquent Orders

In the past, software powerful enough to accomplish these goals required expensive hardware, with a less-than-user-friendly operating system. JAMS---JAAS Advanced Manufacturing Software, introduces a new alternative.

JAMS was written to interface seamlessly with Solomon Software's award winning applications suite. JAMS uses both the financial and distribution modules of Solomon 4.2 to provide a comprehensive solution. By leveraging Solomon's flexible architecture, JAMS has created an environment that is easy to manage, yet powerful. JAMS readily provides the information needed by manufacturers to remain profitable in a changing marketplace.

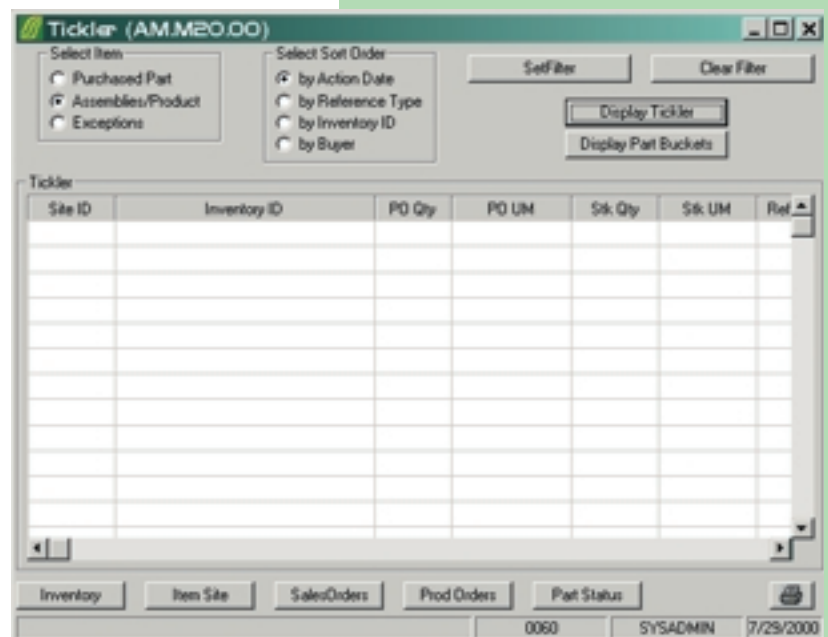
JAMS is a series of application modules designed to provide real time enterprise solutions for many different types of manufacturers. The principals of JAAS have over 100 years of experience in the design and implementation of manufacturing systems. When combined with Solomon, JAMS provides the most cost effective manufacturing system in the mid-range market today.

MRP: Not Too Much Too Soon

Your company just received a large order from a new account. Initial deliveries begin in 6 months. The sub-assemblies on the 4th level of the Bill Of Material have a 120 day lead-time on the raw material components needed to manufacture. How will the purchasing and delivery of that material affect not only your investment in inventories, but other orders from existing customers? The answer to this and other questions is the JAMS MRP Module.

The MRP Generation Program determines which parts and sub-assemblies are required to fulfill demand. All lead, queue, manufacturing, and outside processing times are calculated for each part or sub-assembly. The beginning date for the purchasing of parts or manufacturing of sub-assemblies is calculated and made available on the various MRP screens and reports. Work orders and purchasing requirements are generated so jobs may be scheduled and all required parts ordered.

Non-MRP tracked items (bulk items, tools and assembly aids) can be added to the respective BOM for release to the manufacturing floor. This ensures that all required parts, tools and information are available to manufacturing upon release of a work order.



The Tickler Screen is a powerful way to alert you to the results of an MRP change.

MRP Generation

The JAMS MRP Module will support two methods to determine the resources required for manufacturing demand.

Incremental Regeneration (IRG)

This method determines manufacturing requirements by updating the resource file with changes that have occurred throughout the day. The interval of the IRG is user selectable and can be time or transaction based.

Full Regeneration (FRG)

This method determines manufacturing requirements by a complete analysis of all demand. After a successful run, the old resource requirements are cleared and replaced with the newly calculated requirements.

WINDOWS NT AT YOUR SERVICE

The JAMS MRP module has been designed to run as a Microsoft Windows NT service on any system on the network. This key design characteristic allows the system to deliver information in a fast, easy-to-administer process. Since it functions as a NT service, MRP can be performed in the traditional (full) regenerative mode as well as in an incremental mode without sacrificing performance. The service runs on either Microsoft Windows NT Server 4.0, Microsoft Windows NT Workstation 4.0 or Microsoft Windows 2000. This is why the JAMS MRP module can deliver mainframe type response on a NT network. You no longer have to sacrifice performance for functionality in your system.

BUSINESS ISSUES

Your most important customer has just increased the size of his last order.

Your buyers need access to current information for ordering.

Your customer service people need a way to determine when product can be delivered.

SOLUTIONS

The requirement is noted by the incremental MRP, running as a NT service, which reflects the necessary change to production and purchasing.

With the JAMS Tickler screen, the user is shown all parts that require a PO and the dates they should be ordered by to make customer delivery dates.

With the Product Parts Analysis screen, they can ascertain what parts are required and the best possible estimate of when a product can be delivered.

Material Requirement Planning Module Features:

- Net Change On-Line Process
- Firm and Planned Production Orders
- Forecasts
- Windows NT scalability
- Generates Purchase Orders
- Configurable reports



JAAS Systems LTD

555 Lancaster Ave.

Reynoldsburg, Ohio 43068

(614) 759-4167 Office

(614) 866-9946 Fax

Solomon Software, the Solomon logo, and Solomon IV are the trademarks of Solomon Software, Inc.

Microsoft and Windows NT are either registered trademarks or trademarks of Microsoft Corporation in the United States and/or other countries.

JAAS Advanced Manufacturing Software, the JAMS logo, the JAAS logo, and JAMS are the trademarks of, and When Manufacturing is Your Business is a service mark of, JAAS Systems, Ltd.

Copyright 1999, 2000 JAAS Systems, Ltd. All Rights Reserved.

All features/functions mentioned within are subject to change. This document is for informational purposes only. JAAS Systems, Ltd. makes no warranties, expressed or implied, in this document.