

Capacity Requirements Planning (CRP)

When Manufacturing is Your Businesssm

JAMS - - - JAAS Advanced Manufacturing Software, Capacity Requirements Planning (CRP) Module can help you:

- Control Plant Capacity
- Level production schedule
- Manage scheduling conflicts
- Manage all work centers from a single screen

JAMS CRP module - - - production hampered by lack of timely information is now a problem of the past. It provides information to balance the work that needs to be done with available resources.

JAMS was written to interface seamlessly with Solomon Software's award winning applications suite. JAMS uses both the financial and distribution modules of Solomon 4.x to provide a comprehensive solution. By leveraging Solomon's flexible architecture, JAMS has created an environment that is easy to manage, yet powerful. JAMS readily provides the information needed by manufacturers to remain profitable in a changing marketplace.

JAMS is a series of application modules designed to provide real time enterprise solutions for many different types of manufacturers. The principals of JAAS have over 100 years of experience in the design and implementation of manufacturing systems. When combined with Solomon, JAMS provides the most cost effective manufacturing system in the mid-range market today.

Level Production Schedules

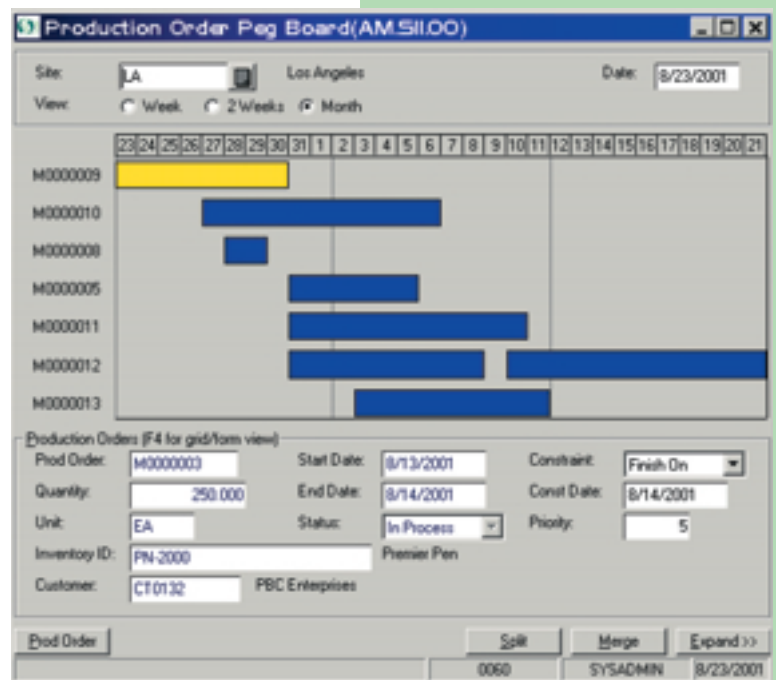
Demand for your products can rapidly increase or decrease based on the conditions of the market. Key customers can change orders at critical times.

Communication needs to be accurate and timely among production, purchasing, and

scheduling personnel. JAMS CRP module - - - is the key component that helps your master scheduler measure, react, and balance changes in the supply and demand for labor and machine capacity.

Flexibility in Setting Your Warning Threshold

JAMS CRP module - - - allows you to adjust the warning threshold, which then alerts you to potential capacity issues related to production. *Warning* and *Critical* thresholds are user defined that monitor capacity in percentage and days late. Once these thresholds are set, JAMS CRP module provides reports indicating when production orders could be late and Work Centers have capacity problems.



The Production Order Peg Board Screen allows you to display all production orders that are scheduled for a site.

Solution to Your Bottlenecks

JAMS CRP module - - provides a complete list of what has to be manufactured and when it has to be shipped. This enables your master scheduler to have control over the production process. Changes in the scheduled dates and times help the master scheduler balance the shop load. Once changed, the scheduler can fine-tune the work orders needed for efficient use of plant resources, giving the scheduler a real time view of what resources are needed and available. With the JAMS Material Requirements Planning (MRP) module, the scheduler is assured that the inventory has been purchased and is scheduled to arrive on time.

Scheduling Workpad Makes It Easier

Scheduling Workpad screen is the heart of the JAMS CRP module. The scheduler can easily go to screens for Work Center Gantt, Work Center Capacity, or Production Order Gantt to view details and correct scheduling problems. If you are running the JAMS MRP module, Workpad will display MRP exception messages and all MRP planned orders.

BUSINESS ISSUES

Your most important customer just called and needs 1,000 pieces of his 10,000 piece order.

You need to know what orders are in a work center.

Your customer service representative needs a way to determine when products can be delivered.

SOLUTIONS

The Split Order feature of the Production Peg Board will allow the scheduler to split the order into smaller lots to get the critical amount into production.

The Pegged Orders screen lists all of the orders that are scheduled for this Work Center.

The MRP Exceptions screen will show the exception message from MRP. These messages include purchase orders that are late, need to be deleted, expedited, or deferred.

Capacity Requirements Planning Module Features:

- Displays Exception Messages from MRP
- Scheduling Capacity Screen for Visual Determination of Utilized Capacity
- Production Order Peg Board Allows for Split Orders to Smooth Schedule
- Production Order Gantt Displays all Operations for a Production Order
- Workpad Scheduler Issues Alerts to Problems
- Extensive Drill Down Capabilities for Additional Information

JAAS
SYSTEMS

JAAS Systems LTD

555 Lancaster Ave.

Reynoldsburg, Ohio 43068

(614) 759-4167 Office

(614) 866-9946 Fax

www.jaas.net

Solomon Software, Great Plains and the Great Plains logo are either registered trademarks or trademarks of Great Plains Software, Inc., in the United States and/or other countries. Great Plains Software, Inc., is a wholly owned subsidiary of Microsoft Corporation.

Microsoft and Windows NT are either registered trademarks or trademarks of Microsoft Corporation in the United States and/or other countries.

JAAS Advanced Manufacturing Software, the JAMS logo, the JAAS logo, and JAMS are the trademarks of, and *When Manufacturing Is Your Business* is a service mark of, JAAS Systems, Ltd.

© Copyright 1999-2001 JAAS Systems, Ltd. All Rights Reserved

All features/functions mentioned within are subject to change. This document is for informational purposes only. JAAS Systems, Ltd., makes no warranties, expressed or implied, in this document.

08/01